

**Name: Rabbit polyclonal anti-FOXD3 antibody**  
**Product Data Sheet - ANTIBODY****Catalog: TA315355**

<b>Components:</b>	• Rabbit polyclonal anti-FOXD3 antibody (TA315355)
<b>Amount:</b>	100ul
<b>Immunogen:</b>	The antiserum was produced against synthesized peptide derived from internal of human FOXD3.
<b>Host:</b>	Rabbit
<b>Isotype:</b>	IgG
<b>Species Reactivity:</b>	Human, Mouse
<b>Guaranteed Applications:</b>	WB, IHC
<b>Suggested Dilutions:</b>	WB: 1:500~1:3000, IHC: 1:50~1:100, ELISA: 1:5000
<b>Concentration:</b>	1mg/ml
<b>Buffer:</b>	Phosphate buffered saline (without Mg <sup>2+</sup> and Ca <sup>2+</sup> ), pH 7.4, 150mM NaCl, 0.02% sodium azide and 50% glycerol.
<b>Purification:</b>	The antibody was affinity-purified from rabbit antiserum by affinity-chromatography using epitope-specific immunogen.
<b>Storage Condition:</b>	Shipped at -20C. Upon delivery store at -20C. Dilute in PBS (pH7.3) if necessary. Stable for 12 months from date of receipt. Avoid repeated freeze-thaws.

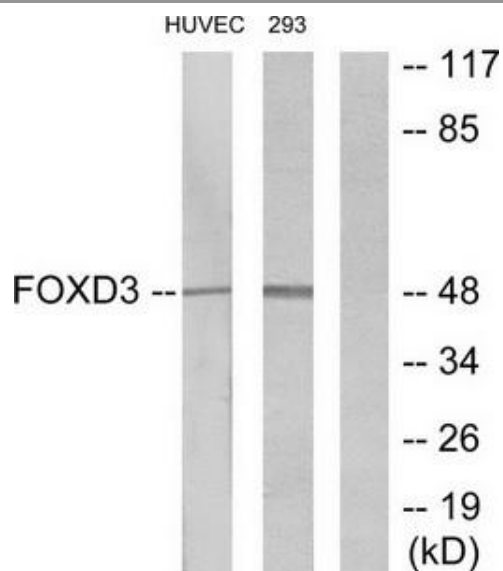
## Target

<b>Target Name:</b>	Homo sapiens forkhead box D3 (FOXD3)
<b>Alternative Name:</b>	AIS1; Genesis; HFH2; VAMAS2
<b>Database Link:</b>	NP_036315
<b>Function:</b>	

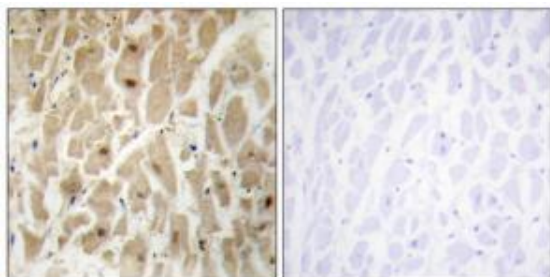
***This product is to be used for laboratory only. Not for diagnostic or therapeutic use.***

© 2014 OriGene Technologies, Inc. 9620 Medical Center Dr., Suite 200, Rockville, MD 20850

## Validation Data



Western blot analysis of extracts from HUVEC cells and 293 cells, using FOXD3 antibody. The lane on the right is treated with the synthesized peptide.



Immunohistochemistry analysis of paraffin-embedded human heart tissue using FOXD3 antibody. The picture on the right is treated with the synthesized peptide.

\* More validation images may be available on our website: <http://www.origene.com/antibody/TA315355.aspx>

***This product is to be used for laboratory only. Not for diagnostic or therapeutic use.***

© 2014 OriGene Technologies, Inc. 9620 Medical Center Dr., Suite 200, Rockville, MD 20850