

**Name: Rabbit polyclonal anti-TM16G (ANO7) antibody**  
**Product Data Sheet - ANTIBODY****Catalog: TA315421**

<b>Components:</b>	• Rabbit polyclonal anti-TM16G (ANO7) antibody (TA315421)
<b>Amount:</b>	100ul
<b>Immunogen:</b>	The antiserum was produced against synthesized peptide derived from C-terminal of human TM16G.
<b>Host:</b>	Rabbit
<b>Isotype:</b>	IgG
<b>Species Reactivity:</b>	Human
<b>Guaranteed Applications:</b>	IHC, IF
<b>Suggested Dilutions:</b>	IHC: 1:50~1:100, IF: 1:100~1:500, ELISA: 1:20000
<b>Concentration:</b>	1mg/ml
<b>Buffer:</b>	Phosphate buffered saline (without Mg <sup>2+</sup> and Ca <sup>2+</sup> ), pH 7.4, 150mM NaCl, 0.02% sodium azide and 50% glycerol.
<b>Purification:</b>	The antibody was affinity-purified from rabbit antiserum by affinity-chromatography using epitope-specific immunogen.
<b>Storage Condition:</b>	Shipped at -20C. Upon delivery store at -20C. Dilute in PBS (pH7.3) if necessary. Stable for 12 months from date of receipt. Avoid repeated freeze-thaws.

## Target

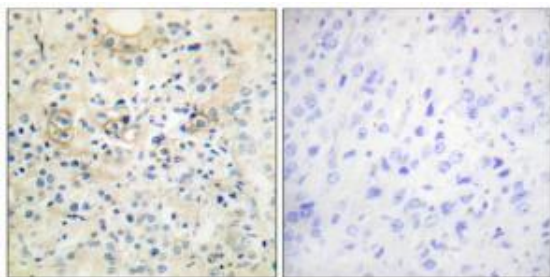
<b>Target Name:</b>	Homo sapiens anoctamin 7 (ANO7), transcript variant NGEP-S
<b>Alternative Name:</b>	D-TMPP; DTMPP; IPCA-5; IPCA5; NGEP; PCANAP5; PCANAP5L; TMEM16G
<b>Database Link:</b>	NP_001001666
<b>Function:</b>	

***This product is to be used for laboratory only. Not for diagnostic or therapeutic use.***

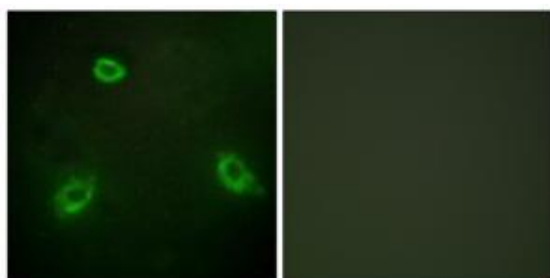
© 2014 OriGene Technologies, Inc. 9620 Medical Center Dr., Suite 200, Rockville, MD 20850

## Validation Data

---



Immunohistochemistry analysis of paraffin-embedded human prostate carcinoma tissue, using TM16G antibody. The picture on the right is treated with the synthesized peptide.



Immunofluorescence analysis of HepG2 cells, using TM16G antibody. The picture on the right is treated with the synthesized peptide.

\* More validation images may be available on our website: <http://www.origene.com/antibody/TA315421.aspx>

---

***This product is to be used for laboratory only. Not for diagnostic or therapeutic use.***

© 2014 OriGene Technologies, Inc. 9620 Medical Center Dr., Suite 200, Rockville, MD 20850

---