

Name: Rabbit polyclonal anti-PNPLA8 antibody
Product Data Sheet - ANTIBODY**Catalog: TA315422**

Components:	• Rabbit polyclonal anti-PNPLA8 antibody (TA315422)
Amount:	100ul
Immunogen:	The antiserum was produced against synthesized peptide derived from internal of human PNPLA8.
Host:	Rabbit
Isotype:	IgG
Species Reactivity:	Human, Mouse
Guaranteed Applications:	WB
Suggested Dilutions:	WB: 1:500~1:3000, ELISA: 1:40000
Concentration:	1mg/ml
Buffer:	Phosphate buffered saline (without Mg ²⁺ and Ca ²⁺), pH 7.4, 150mM NaCl, 0.02% sodium azide and 50% glycerol.
Purification:	The antibody was affinity-purified from rabbit antiserum by affinity-chromatography using epitope-specific immunogen.
Storage Condition:	Shipped at -20C. Upon delivery store at -20C. Dilute in PBS (pH7.3) if necessary. Stable for 12 months from date of receipt. Avoid repeated freeze-thaws.

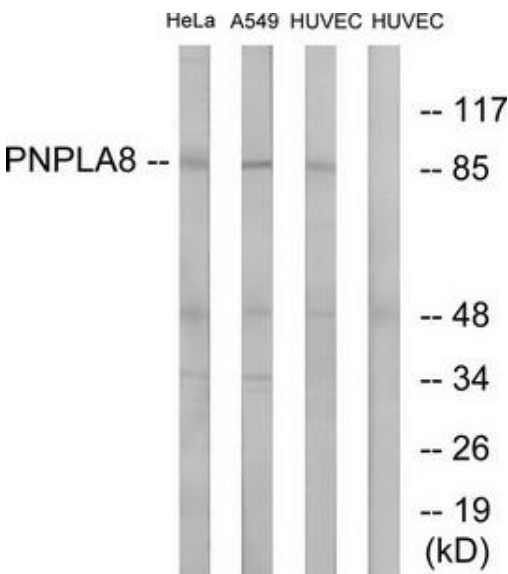
Target

Target Name:	Homo sapiens patatin-like phospholipase domain containing 8 (PNPLA8), transcript variant 1
Alternative Name:	IPLA2(GAMMA); IPLA2-2; IPLA2G; iPLA2gamma
Database Link:	NP_056538
Function:	

This product is to be used for laboratory only. Not for diagnostic or therapeutic use.

© 2014 OriGene Technologies, Inc. 9620 Medical Center Dr., Suite 200, Rockville, MD 20850

Validation Data



Western blot analysis of extracts from HeLa cells, A549 cells and HUVEC cells, using PNPLA8 antibody. The lane on the right is treated with the synthesized peptide.

* More validation images may be available on our website: <http://www.origene.com/antibody/TA315422.aspx>