

Name: Rabbit polyclonal anti-TAS2R10 antibody
Product Data Sheet - ANTIBODY**Catalog: TA315431**

Components:	• Rabbit polyclonal anti-TAS2R10 antibody (TA315431)
Amount:	100ul
Immunogen:	The antiserum was produced against synthesized peptide derived from internal of human TAS2R10.
Host:	Rabbit
Isotype:	IgG
Species Reactivity:	Human
Guaranteed Applications:	WB, IF
Suggested Dilutions:	WB: 1:500~1:3000, IF: 1:100~1:500, ELISA: 1:10000
Concentration:	1mg/ml
Buffer:	Phosphate buffered saline (without Mg ²⁺ and Ca ²⁺), pH 7.4, 150mM NaCl, 0.02% sodium azide and 50% glycerol.
Purification:	The antibody was affinity-purified from rabbit antiserum by affinity-chromatography using epitope-specific immunogen.
Storage Condition:	Shipped at -20C. Upon delivery store at -20C. Dilute in PBS (pH7.3) if necessary. Stable for 12 months from date of receipt. Avoid repeated freeze-thaws.

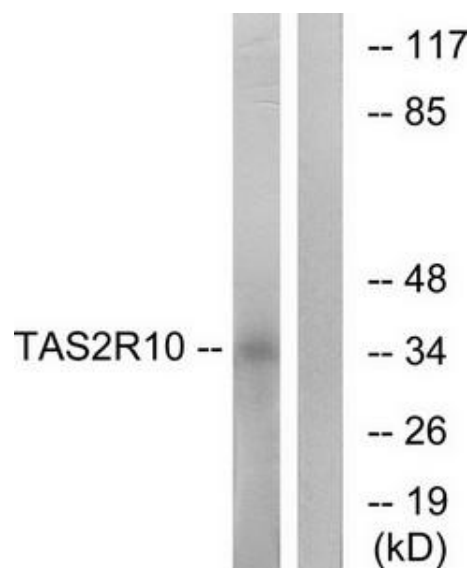
Target

Target Name:	Homo sapiens taste receptor, type 2, member 10 (TAS2R10)
Alternative Name:	T2R10; TRB2
Database Link:	NP_076410
Function:	

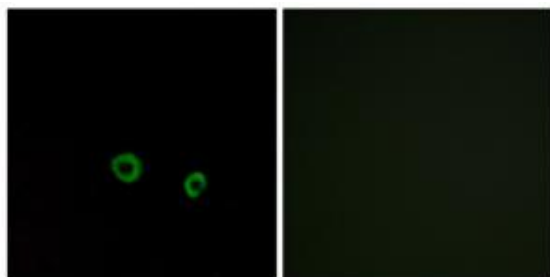
This product is to be used for laboratory only. Not for diagnostic or therapeutic use.

© 2014 OriGene Technologies, Inc. 9620 Medical Center Dr., Suite 200, Rockville, MD 20850

Validation Data



Western blot analysis of extracts from LOVO cells, using TAS2R10 antibody. The lane on the right is treated with the synthesized peptide.



Immunofluorescence analysis of MCF-7 cells, using TAS2R10 antibody. The picture on the right is treated with the synthesized peptide.

* More validation images may be available on our website: <http://www.origene.com/antibody/TA315431.aspx>

This product is to be used for laboratory only. Not for diagnostic or therapeutic use.

© 2014 OriGene Technologies, Inc. 9620 Medical Center Dr., Suite 200, Rockville, MD 20850
