

Name: Rabbit polyclonal anti-RS27L antibody
Product Data Sheet - ANTIBODY**Catalog: TA315441**

Components:	<ul style="list-style-type: none">• Rabbit polyclonal anti-RS27L antibody (TA315441)• 1 vial of 20ug myc-DDK tagged RPS27L HEK293T over-expression lysate lyophilized in RIPA buffer (LC414323). (Reconstitute into 20ul of 1x SDS sample buffer before loading; load 5ul per lane as WB control or as desired)
Amount:	100ul
Immunogen:	The antiserum was produced against synthesized peptide derived from N-terminal of human RS27L.
Host:	Rabbit
Isotype:	IgG
Species Reactivity:	Human, Mouse
Guaranteed Applications:	WB
Suggested Dilutions:	WB: 1:500~1:3000, ELISA: 1:10000
Concentration:	1mg/ml
Buffer:	Phosphate buffered saline (without Mg ²⁺ and Ca ²⁺), pH 7.4, 150mM NaCl, 0.02% sodium azide and 50% glycerol.
Purification:	The antibody was affinity-purified from rabbit antiserum by affinity-chromatography using epitope-specific immunogen.
Storage Condition:	Shipped at -20C. Upon delivery store at -20C. Dilute in PBS (pH7.3) if necessary. Stable for 12 months from date of receipt. Avoid repeated freeze-thaws.

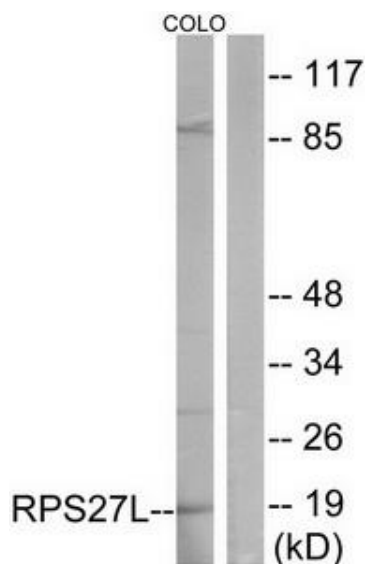
Target

Target Name:	Homo sapiens ribosomal protein S27-like (RPS27L)
Alternative Name:	40S ribosomal protein S27-like; ribosomal protein S27-like
Database Link:	NP_057004
Function:	

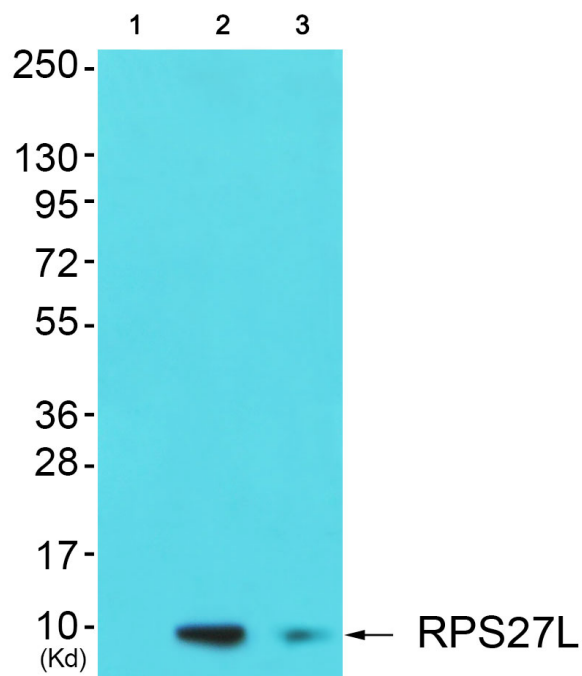
This product is to be used for laboratory only. Not for diagnostic or therapeutic use.

© 2014 OriGene Technologies, Inc. 9620 Medical Center Dr., Suite 200, Rockville, MD 20850

Validation Data



Western blot analysis of extracts from COLO cells, using RPS27L antibody. The lane on the right is treated with the synthesized peptide.



Western blot analysis of extracts from 3T3 cells (Lane 2) and HepG2 cells (Lane 3), using RPS27L Antibody. The lane on the left is treated with synthesized peptide.

* More validation images may be available on our website: <http://www.origene.com/antibody/TA315441.aspx>

This product is to be used for laboratory only. Not for diagnostic or therapeutic use.

© 2014 OriGene Technologies, Inc. 9620 Medical Center Dr., Suite 200, Rockville, MD 20850