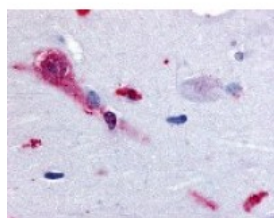




## TAAR1 Antibody

CATALOG NUMBER: 48-144



Immunohistochemistry staining of TAAR1  
in brain, amygdala tissue using TAAR1  
Antibody.

### Specifications

<b>SPECIES REACTIVITY:</b>	Chimpanzee, Human, Monkey
<b>TESTED APPLICATIONS:</b>	ELISA, IHC
<b>APPLICATIONS:</b>	TAAR1 antibody can be used in ELISA, and immunohistochemistry starting at 10 ug/mL.
<b>USER NOTE:</b>	Optimal dilutions for each application to be determined by the researcher.
<b>SPECIFICITY:</b>	BLAST analysis of the peptide immunogen showed no homology with other human proteins, except CDC14A (37%).
<b>IMMUNOGEN:</b>	TAAR1 antibody was raised against a peptide located in the 3rd cytoplasmic domain of TAAR1 (Human).
<b>HOST SPECIES:</b>	Rabbit

### Properties

<b>PURIFICATION:</b>	Immunoaffinity Chromatography
<b>PHYSICAL STATE:</b>	Liquid
<b>BUFFER:</b>	PBS, 0.1% sodium azide.
<b>STORAGE CONDITIONS:</b>	TAAR1 antibody should be stored long term (months) at -80 °C and short term (days) at 4 °C. As with all antibodies avoid freeze/thaw cycles.
<b>CLONALITY:</b>	Polyclonal
<b>CONJUGATE:</b>	Unconjugated

### Additional Info

<b>ALTERNATE NAMES:</b>	TAAR1, RP11-295F4.9, RTAR1, Snorf33, TRAR1, TaR-1, TAR1, TA1, Trace amine receptor 1
<b>ACCESSION NO.:</b>	Q96RJ0
<b>PROTEIN GI NO.:</b>	38258636
<b>OFFICIAL SYMBOL:</b>	TAAR1
<b>GENE ID:</b>	134864

### Background

**BACKGROUND:**

TAAR1/TA1 is a Trace Amine Receptor activated by tyramine and beta-PEA. TAAR1/TA1 is likely to be involved in regulation of blood pressure, electrolyte homeostasis, and in controlling mood. An allelic variant of TAAR1/TA1 has been identified.

---

**FOR RESEARCH USE ONLY**

December 13, 2016