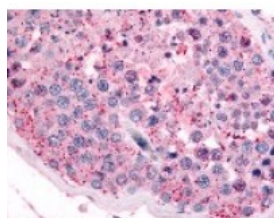




## PAK6 Antibody

CATALOG NUMBER: 48-308



Immunohistochemistry staining of PAK6 in testis tissue using PAK6 Antibody.

### Specifications

<b>SPECIES REACTIVITY:</b>	Bat, Bovine, Chicken, Dog, Gibbon, Gorilla, Horse, Human, Monkey, Mouse, Orangutan, Rat
<b>TESTED APPLICATIONS:</b>	ELISA, IHC
<b>APPLICATIONS:</b>	PAK6 antibody can be used in immunohistochemistry starting at 20 ug/mL.
<b>USER NOTE:</b>	Optimal dilutions for each application to be determined by the researcher.
<b>SPECIFICITY:</b>	BLAST analysis of the peptide immunogen showed no homology with other human proteins, except PAK7 (69%).
<b>IMMUNOGEN:</b>	PAK6 antibody was raised against a peptide located in the N-Terminal domain of PAK6 (Human).
<b>HOST SPECIES:</b>	Rabbit

### Properties

<b>PURIFICATION:</b>	Immunoaffinity Chromatography
<b>PHYSICAL STATE:</b>	Liquid
<b>BUFFER:</b>	PBS, 0.1% sodium azide.
<b>STORAGE CONDITIONS:</b>	PAK6 antibody should be stored long term (months) at -80 °C and short term (days) at 4 °C. As with all antibodies avoid freeze/thaw cycles.
<b>CLONALITY:</b>	Polyclonal
<b>CONJUGATE:</b>	Unconjugated

### Additional Info

<b>ALTERNATE NAMES:</b>	PAK6, PAK5, p21-activated kinase 6, p21-activated protein kinase 6, PAK-5, PAK-6, p21(CDKN1A)-activated kinase 6
<b>ACCESSION NO.:</b>	Q9NQU5
<b>PROTEIN GI NO.:</b>	23396789
<b>OFFICIAL SYMBOL:</b>	PAK6
<b>GENE ID:</b>	56924

### Background

**BACKGROUND:** PAK6, a PAK (STE20) type protein kinase, contains a N-terminal Cdc42/Rac interactive binding (CRIB) motif and

a C-terminal kinase domain. The protein has been shown to bind to GTP-Cdc42 and GTP-Rac; however, in contrast to most PAKs, kinase activity was not stimulated by Cdc42 or Rac, but could be stimulated by androgen receptor (AR) binding. PAK6 protein also has been shown to bind to estrogen receptor alpha.

---

**FOR RESEARCH USE ONLY**

December 13, 2016